
ASBESTOS REFURBISHMENT SURVEY REPORT

Of

St Kevins, Chapel, Administration Block,
Farmyard, Workshop and Ground Slabs

Our Ladys

Lee Road

Cork

On behalf of

Land Development Agency

This report supersedes R29173 issued on the 11th March 2020

Unit 2BeaT Centre,
Stephenstown Industrial Estate,
Balbriggan, Co. Dublin
Tel: (01) 6905907
Fax: (01) 8020439
Email: info@ohss.ie
Website: www.ohss.ie





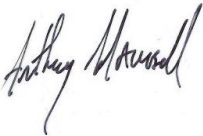

Directors: Deirdre Corry, Paul Foran Company Reg no: 354843



Project Number
29173

DOCUMENT CONTROL

Client	Land Development Agency
Project Title	29173 Our Lady's Cork RDAS
Document Title	Asbestos Refurbishment Report
Report No.	29173

Rev	Status	Author(s)	Revision History	Approved By	Issue Date
D01	Final	 Anthony Maunsell	Initial Release to Client	 Paul Foran	11 th Mar 2020
D01	Final	 Anthony Maunsell	Updated to include additional buildings on site.	 Paul Foran	26 th Mar 2020

Contents

1. Executive summary
2. Scope of the project
3. General site and survey information
4. Conclusions and actions
5. Survey results

1 EXECUTIVE SUMMARY

OHSS carried out an asbestos survey to HSG264 requirements for the purposes of identifying asbestos containing materials in the premises(s) prior to the refurbishment of the area. It should be noted that this survey only includes areas within the scope of the survey and should not be read as an extensive assessment of all possible asbestos containing materials (ACMs) in the premises.

The findings of this survey are contained within the summary tables and risk assessment in the results section of this report.

St Kevins:

- Vinyl floor tiles and bitumen adhesive containing asbestos are present to the stairwells.
- Fire Doors within the building contain asbestos.
- The internal floors of the building are badly fire damaged and were not accessed during the survey. ACM's are presumed in these areas.
- The basement boiler has asbestos rope seals.
- AIB door panels are present in the boiler house.
- Gaskets containing asbestos are present to the boiler house pipework.
- Inaccessible areas of the basement are presumed to contain asbestos.

The Chapel:

- Rope seals to the boiler unit contain asbestos.
- Pipework flange gaskets contain asbestos.

Farmyard:

- The roof of the shed is asbestos cement sheeting.
- Broken asbestos cement sheeting is scattered throughout the farmyard.
- Vinyl floor tiles and bitumen containing asbestos are present to the floors of the farmyard offices.

Administration Block:

- Vinyl floor tiles containing asbestos are present to the side entrance.
- Vinyl floor tiles containing asbestos are present to the rear link corridor.
- Roof slates containing asbestos are present to the rear lean too.
- Rope seals to the boiler unit contain asbestos.
- There was no internal access to the administration block floors.

House:

- There was no internal access to the House and ACM's are presumed to be present.

Workshop

- There was no internal access to the House and ACM's are presumed to be present.

Prior to works at the property the known ACM's should be removed by a specialist asbestos contractor and disposed of as asbestos waste.

During works on the fire damaged building the contractor should have a competent asbestos consultant on site to identify any ACM's that may become discovered during the works.

The survey undertaken complies with the legal duty to identify the presence of asbestos containing materials and carryout a risk assessment in respect of these materials at the premises. The risk assessment will form part of the overall safety management system for the contractor carrying out any asbestos works. The results of the risk assessment must be communicated to the employees and made available to them. This report may be used by the Project Supervisor for Design Process and the designers to highlight the presence of asbestos containing materials found in the buildings.

Where following the refurbishment work, asbestos containing materials remain in situ it may be necessary to undertake a management survey of the areas.

While every effort has been taken to ensure the accuracy of this report OHSS do not accept responsibility for any omissions or areas of the building not addressed in the report. This report is intended to assist in reducing the possibility of accidents and ill health by bringing to the client's attention identified asbestos containing materials. Within the constraints of time and resources every effort has been made to identify ACM's. It is not implied that all other hazards are under control at the time of inspections.

THIS REPORT SHOULD BE READ IN ITS ENTIRETY AND SHALL NOT BE REPRODUCED EXCEPT IN FULL WITHOUT THE APPROVAL OF OHSS AND THE CLIENT.

Questions arising from the survey report should be directed, in the first instance, to the author of this report, who will clarify any technical issues raised.

Further information on previous surveys should be sought from the client.

1.1.1 ABBREVIATIONS

Throughout the report the following terms and abbreviations may be used:

ACM	Asbestos containing material.
AND	Asbestos not detected.
MMMF	This describes any machine made mineral fibre, fibreglass, Rockwool, ceramic fibres and other such material.
MA	Material Assessment Score as defined in HSG264 relates to the friability of the product. It is used to indicate the level of risk posed by the product
AIB	Asbestos Insulating Board.
AC	Asbestos Cement
Chrysotile	Commonly known as white asbestos.
Amosite	Commonly known as brown asbestos.
Crocidolite	Commonly known as blue asbestos.
Amphibole	Generic name for all asbestos types, excluding Chrysotile.
BOHS	British Occupational Hygiene Society
INAB	Irish National Accreditation Board

2 SCOPE OF WORK

2.1 GENERAL

The scope of the survey included;

A refurbishment/demolition asbestos survey of St Kevins, Our Ladys, Lee Road Cork prior to works at the property.

The purpose of the survey is to identify and risk assess asbestos containing materials (ACM's) in the premises or area where planned refurbishment works are to take place. The survey aims to provide sufficient information for designers and the project supervisor for design process to take account of identified asbestos risks. The design team must take account of known locations where ACM's are identified and plan to eliminate the risk or prevent exposure to asbestos during the construction phase. Asbestos is a particular risk within the definitions of "particular risk" in the Safety Health and Welfare at Work (Construction) Regulations 2013 and should be highlighted in the design risk assessments accompanying the Preliminary Safety and Health Plan.

The surveyor undertook as far as reasonably practicable to, record the location, extent and product type of any presumed or known ACMs. All areas identified in the survey were inspected and the information recorded on the accessibility, condition and surface treatment of any presumed or known ACMs. The asbestos type was identified either by collecting representative samples of suspect materials for laboratory identification, or by making a presumption based on the product type and its appearance or previous sampling of similar products..

2.2 BUILDING DETAILS AND CONSTRUCTION TYPE

Constructed in the 1850's Our Ladys is a multi-building former asylum built using the traditional methods for the era of construction.

3 GENERAL SITE AND SURVEY INFORMATION

Client Details: Land Development Agency

Client Address: Land Development Agency
2nd Floor Ashford House
Tara Street
Dublin

Site Address: St Kevins
Our Ladys
Lee Road
Cork

Commissioned By: Matthew Gallagher

Surveyor: Anthony Maunsell

Staff Consulted during the survey Matthew Gallagher

Date of Survey: 5th Mar 2020 & 19th Mar 2020

Date of Report: 11th Mar 2020 & 26th Mar 2020

Description of the Areas Surveyed: Accessible areas of Our Ladys.

Excluded Areas: As per the clients requirements the following areas were not accessed; Beneath ground level.

Survey Methodology: Onsite inspection bulk sampling and risk assessment were conducted in accordance with OHSS documented in-house work instructions.

Analysis of asbestos fibres in bulk materials is carried out at the OHSS laboratory. OHSS is accredited by INAB and meet the requirements of International Standard BS EN ISO/IEC 17025 for the sampling and analysis of asbestos fibres in bulk materials.

The surveyor conducted a systematic inspection of the nominated areas. Where access for sampling purposes was not possible, a visual assessment has been made if possible. For similar/repetitive elements, a representative bulk sampling protocol has been adopted following visual examination and assessment.

Bulk Samples were obtained using fibre suppression techniques in order to minimise respirable fibre release. Each sample was double bagged, uniquely labelled on site and then returned to the laboratory for analysis using plane and polarised light microscopy and dispersion staining techniques as defined in UK HSE Guidelines HSG248 and the OHSS documented in-house work instructions.

The results of the survey together with the laboratory bulk sample analysis records are given in further sections to this report.

The Safety Health and Welfare at Work (Exposure to Asbestos) Regulations 2006-2010 allows materials to be 'presumed' to contain asbestos. Therefore in the asbestos survey, materials can be presumed to contain asbestos.

There are two levels of 'presumption':

1. **Strongly presumed:** in this case the material looks as if it is an ACM, or that it might contain asbestos. This conclusion can be reached through visual inspection alone by an experienced, well-trained surveyor, familiar with the range of asbestos products. Examples of 'strong

presumption' are:

- where laboratory analysis has confirmed the presence of asbestos in a similar construction material;
- materials in which asbestos is known to have been commonly used in the manufactured product at the time of installation (eg corrugated cement roof and wall sheeting, cement gutters and drainpipes, cement water tanks, ceiling tiles, insulating boards);
- materials which have the appearance of asbestos but no sample has been taken, eg thermal insulation on a pipe where fibres are clearly visible
- where the laboratory has sampled the same material in a different location and subsequent laboratory analysis has found that it does not contain asbestos.

2. **Presumed:** is the 'default' situation where a material is **presumed** to contain asbestos because there is insufficient evidence (eg no analysis) to confirm that it is asbestos free, or where a surveyor decides that it is easier under the planned management arrangements to presume certain materials contain asbestos. Many non-asbestos materials will also be presumed to contain asbestos using this system.

There is a further default situation where materials must be **presumed** to contain asbestos. **The default applies to areas which cannot be accessed or inspected. In this situation any area not accessed or inspected must be presumed to contain asbestos, unless there is strong evidence that it does not.**

The risk assessment process (also known as risk algorithms) designed by HSE, allow asbestos containing materials to be ranked according to a Material Assessment algorithm and the HSE have related the scores obtained in the Materials

Assessment algorithms in HSG 264 to a number of risk categories that may be used to guide the employers as to the best course of action to take to mitigate the risk. These are further explained in our risk assessment sheets contained within this report.

These scores can then be ranked and so decisions can be taken as to what actions are required to control the risks from asbestos containing materials during refurbishment.

4 CONCLUSIONS AND ACTIONS

Where asbestos containing materials were identified in the survey recommendations are provided in the asbestos register and risk assessments. A further explanation of the terms used in the management of asbestos containing materials risks are given below.

Asbestos is a known human carcinogen (cancer causing agent) that was used extensively in Ireland up to 2000 when it was finally banned from use. Asbestos fibres may cause fatal lung disease when inhaled. These diseases are not sudden and may take many years to develop from the first exposures. **Asbestos containing materials constitute a particular risk within the meaning of the Safety Health and Welfare at Work (Construction) Regulations 2013 and should be addressed in the Preliminary Health and Safety Plan by the designers and the Project Supervisor Design Process.**

Asbestos is a fibrous material and has excellent insulating and fire resistant properties. Asbestos was seldom used as pure asbestos fibres but rather combined with other products to add strength and stability or fire resistance to them. Asbestos may be found in products from a few percent up to 90% depending on the type of material.

Asbestos is a hazard to humans but the risks posed by asbestos containing materials (ACM) will depend on the type of ACM found. In simple terms where asbestos products are flaky and would crumble under hand pressure quite easily they are termed friable. The more friable the ACM the more risk there is to the individual handling the material. This is reflected in the material assessment scores in the risk assessments

No person is permitted to work with asbestos containing materials unless they have received training and have taken all reasonable steps to prevent exposure to asbestos. The requirement for training is detailed in Regulation 17 of the Safety Health and Welfare at Work (Exposure to Asbestos) Regulations, 2006-2010

4.1 REFURBISHMENT OPTIONS

ACM are found in many industrial buildings, hospitals, schools and homes. These materials were installed before 2000 with the peak period for installation occurring from the 1970's to the late 1980's. ACM's installed some 20-30 years ago will vary in condition depending on the type of product and the use of that product. The Safety health and Welfare at Work (Exposure to Asbestos) Regulations 2006-2010 requires a managed approach to asbestos containing materials in workplaces. These regulations require employers to identify the presence of asbestos containing materials and to assess the risk posed to workers by these

ACM's based on the likely work activities and the potential for these work activities to disturb ACM's.

The outcome of these risk assessments are as follows;

1. Manage in place & monitor periodically

Where ACM's are in good condition and pose minimal risk to building occupants or maintenance personnel and are not likely to be disturbed during refurbishment work it is recommended that they remain in situ and are monitored on a regular basis as to their condition. The frequency of monitoring is usually every 6 months but this should be determined by the asbestos management plan.

2. Encapsulate and manage in place

ACM's that are damaged but repairable can be repaired by a competent trained contractor and then managed in place. Where the repairs involve containing the ACM's behind a protective material (Encapsulation) it is important that the original ACM and the new surfaces are labelled as to the presence of ACM's. Following encapsulation of the asbestos containing materials a site clearance for re-occupation certificate must be obtained from a competent independent analyst prior to re-occupancy of the area in accordance with **Regulation 15 (10) of the Safety Health and Welfare at Work (Exposure to Asbestos) Regulations 2006-2010.**

3. Environmental clean

Where there is debris from the installed ACM's in the surrounding area it may be recommended that this material is removed by environmentally cleaning the area around the materials. Following removal of the asbestos containing materials a site clearance for re-occupation certificate must be obtained from a competent independent analyst prior to re-occupancy of the area in accordance with **Regulation 15 (10) of the Safety Health and Welfare at Work (Exposure to Asbestos) Regulations 2006-2010.** The materials can then be managed in place as above.

4. Remove

Where ACM's are found to have reached the end of their serviceable life and the presence of the material in the work area may lead to increased human exposure it may be necessary to remove the ACMs. ACM removal will form part of a construction project and will require careful coordination to be carried out safely. Following removal of the asbestos containing materials a site clearance for re-occupation certificate must be obtained from a competent independent analyst prior to re-occupancy of the area in

accordance with **Regulation 15 (10) of the Safety Health and Welfare at Work (Exposure to Asbestos) Regulations 2006-2010.**

5. Restrict access

Where ACM's are found to have reached the end of their serviceable life and the presence of the materials in the work area may lead to increased human exposure it may be necessary to restrict access to areas where the ACMs are located pending removal. Where access is restricted it is advisable to have a permit to work system in place to control all work activities in the area. Removal or encapsulation will be required prior to the area being returned to normal occupancy.

4.2 MATERIALS ASSESSMENT SCORING

4.2.1 ASBESTOS RISK ASSESSMENT

Employers are required under the Safety Health and Welfare at Work (Exposure to Asbestos) Regulations 2006-2010 to identify if asbestos containing materials are present in the workplace and to perform a risk assessment. The risk posed by asbestos is determined by the current and potential level of employee exposure to asbestos fibres. The following parameters are used in developing a risk assessment for asbestos containing materials;

4.2.2 ASBESTOS TYPE

There are six regulated types of asbestos. The common names associated with some of the asbestos types are shown in brackets below;

- Crocidolite (Blue Asbestos)
- Amosite (Brown Asbestos)
- Actinolite
- Anthophyllite
- Tremolite
- Chrysotile (White Asbestos)

International studies have identified that they have different potential to cause harm. Crocidolite is the most dangerous and Chysotile the least.

4.2.3 SURFACE TREATMENT

Surface treatment is a term used to describe how the fibres in the material are protected from release. The safest materials are composites such as cement and plastic where the fibres are contained within a material within a strong matrix. At the other end of the scale are materials

that damage easily and have no protective coating such as sprayed asbestos and boiler lagging.

4.2.4 FRIABILITY

Products that damage easily such as sprayed asbestos are clearly more likely to release fibres than strong materials such as cement. This 'likelihood of fibre release' or crumbliness is commonly referred to as friability. Materials with high friability (such as insulation) are higher risk than those with low friability (such as vinyl floor tiles).

4.2.5 CONDITION

Products which are damaged are more likely to release fibres than those in good condition and are ranked according to the extent of damage observed.

4.3 CALCULATING RISK ASSESSMENTS

The HSE developed a risk assessment process within HSG264 which takes these four factors into account and attributes values to each of the factors allowing you to calculate a material risk assessment.

4.3.1 MATERIAL ASSESSMENT ALGORITHM

The material assessment algorithm is commonly used by most surveying organisations to give an indication of how dangerous a material is. Each of the four risk factors (friability, condition, surface treatment and asbestos type) are attributed a score of between 0 and 3 (see below). These scores are accumulated to give a risk score of between 0 and 12 (where 12 is the highest risk).

When using this algorithm it is commonly accepted that materials can be divided into the following risk groups;

Material Risk Rating	Description
10-12	High risk
7-9	Medium risk
5-6	Low risk
2-4	Very low risk

These are colour coded within our risk assessment as outlined above.

4.3.2 HSG264 MATERIAL ASSESSMENT TABLE

Sample Variable	Score	Example of Score
Product type (or debris from product)	1	Asbestos reinforced composites (Plastics, resins, mastics, roofing felts, vinyl floor tiles, semi-rigid paints or decorative finishes, asbestos cement etc)
	2	Asbestos insulation board, mill boards, other low density boards, asbestos textiles, gaskets, ropes and woven textiles, asbestos paper and felt
	3	Thermal insulation (pipe and boiler lagging), Sprayed Asbestos, loose asbestos, asbestos mattresses and packing
Extent of damage / deterioration	0	Good condition: no visible damage
	1	Low Damage: a few scratches or surface marks; broken edges on boards, tiles etc
	2	Medium damage; significant breakage of materials or several small areas where material has been damaged revealing loose asbestos fibres
	3	High damage or delamination of materials, sprays or insulation. Visible asbestos debris
Surface Treatment	0	Composite materials containing asbestos: reinforced plastics, resins, vinyl tiles
	1	Enclosed sprays and lagging, AIB (with exposed face painted or encapsulated), asbestos cement sheets
	2	Unsealed AIB, or encapsulated lagging and sprays
	3	Unsealed lagging and sprays
Asbestos Type	1	Chrysotile
	2	Amphibole asbestos excluding crocidolite
	3	Crocidolite

4.4 REFERENCES

Safety Health and Welfare at Work Act 2005

Safety Health and Welfare at Work (Exposure to Asbestos) Regulations 2006-2010

Safety Health and Welfare at Work (Construction) Regulations 2013

HSG264 The Survey Guide, HSE Books

HSG248 The Analysts Guide, HSE Books

HSG247 The Contractors Guide, HSE Books

5 SURVEY RESULTS



Survey Results



Customer
Site
Survey Date
Valid Until
Commissioned by

Land Development Agency
 Our Ladys Buildings
 5/3/2020
 5/3/2021
 Land Development Agency

Type
Report Number
Surveyor
Review Date
Method

Refurbishment
 29173
 Anthony Maunsell
 5/3/2021
 WI-02 & WI-03



ACM REGISTER

The following areas were found to contain ACM's

Risk Assessment	372648	Location	RA:372648 St Kevin's Fire Doors Internal				
------------------------	--------	-----------------	--	--	--	--	--

Type of Product	Quantity	Condition	Surface Treatment	Asbestos Type	Sample No.	Confirmation	MA	Recommendations
Asbestos Insulation Board	--N\A--	High Damage	Unsealed asbestos insulation boards	Chrysotile & Amosite	AMB20200305004	Sample Taken	10	Priority 1 : Remove ACM's Prior to Refurbishment or Demolition.

Risk Assessment	375038	Location	RA:375038 St Kevins Basement Panel				
------------------------	--------	-----------------	------------------------------------	--	--	--	--

Type of Product	Quantity	Condition	Surface Treatment	Asbestos Type	Sample No.	Confirmation	MA	Recommendations
Asbestos Insulation Board	--N\A--	Low Damage	Unsealed asbestos insulation boards	Chrysotile		Strongly presumed	7	Priority 1 : Remove ACM's Prior to Refurbishment or Demolition.

Risk Assessment	375048	Location	RA:375048 Administration Block Rear Oil Tank Lean too Ground				
------------------------	--------	-----------------	--	--	--	--	--

Type of Product	Quantity	Condition	Surface Treatment	Asbestos Type	Sample No.	Confirmation	MA	Recommendations
Asbestos Cement	--N\A--	High Damage	Asbestos cement sheets	Chrysotile & Amosite		Strongly presumed	7	Priority 1 : Remove ACM's Prior to Refurbishment or Demolition.

Risk Assessment	375035	Location	RA:375035 Our Lady's Church Basement Boiler				
------------------------	--------	-----------------	---	--	--	--	--

Type of Product	Quantity	Condition	Surface Treatment	Asbestos Type	Sample No.	Confirmation	MA	Recommendations
Asbestos Rope	--N\A--	Low Damage	Gasket	Chrysotile	AMB20200319004	Sample Taken	6	Priority 1 : Remove ACM's Prior to Refurbishment or Demolition.



Customer
Site
Survey Date
Valid Until
Commissioned by

Land Development Agency
 Our Ladys Buildings
 5/3/2020
 5/3/2021
 Land Development Agency

Type
Report Number
Surveyor
Review Date
Method

Refurbishment
 29173
 Anthony Maunsell
 5/3/2021
 WI-02 & WI-03



ACM REGISTER

The following areas were found to contain ACM's

Risk Assessment	375036	Location	RA:375036 St Kevins Basement Boiler				
------------------------	--------	-----------------	-------------------------------------	--	--	--	--

Type of Product	Quantity	Condition	Surface Treatment	Asbestos Type	Sample No.	Confirmation	MA	Recommendations
Asbestos Paper	--N\A--	Low Damage	Gasket	Chrysotile		Strongly Presumed	6	Priority 1 : Remove ACM's Prior to Refurbishment or Demolition.

Risk Assessment	375037	Location	RA:375037 St Kevins Basement Pipework Flanges				
------------------------	--------	-----------------	---	--	--	--	--

Type of Product	Quantity	Condition	Surface Treatment	Asbestos Type	Sample No.	Confirmation	MA	Recommendations
Asbestos Rope	--N\A--	Low Damage	Gasket	Chrysotile		Strongly presumed	6	Priority 1 : Remove ACM's Prior to Refurbishment or Demolition.

Risk Assessment	375052	Location	RA:375052 Administration Block Rear Boiler Rope Seals				
------------------------	--------	-----------------	---	--	--	--	--

Type of Product	Quantity	Condition	Surface Treatment	Asbestos Type	Sample No.	Confirmation	MA	Recommendations
Asbestos Rope	--N\A--	Low Damage	Gasket	Chrysotile		Strongly presumed	6	Priority 1 : Remove ACM's Prior to Refurbishment or Demolition.

Risk Assessment	375047	Location	RA:375047 Administration Block Rear Oil Tank Lean too Roof				
------------------------	--------	-----------------	--	--	--	--	--

Type of Product	Quantity	Condition	Surface Treatment	Asbestos Type	Sample No.	Confirmation	MA	Recommendations
Asbestos Cement	--N\A--	Medium Damage	Asbestos cement sheets	Chrysotile & Amosite	AMB20200319005	Sample Taken	6	Priority 1 : Remove ACM's Prior to Refurbishment or Demolition.



Customer
Site
Survey Date
Valid Until
Commissioned by

Land Development Agency
 Our Ladys Buildings
 5/3/2020
 5/3/2021
 Land Development Agency

Type
Report Number
Surveyor
Review Date
Method

Refurbishment
 29173
 Anthony Maunsell
 5/3/2021
 WI-02 & WI-03



ACM REGISTER

The following areas were found to contain ACM's

Risk Assessment	375049	Location	RA:375049 Administration Block Rear Oil Tank Corridor Floor				
------------------------	--------	-----------------	---	--	--	--	--

Type of Product	Quantity	Condition	Surface Treatment	Asbestos Type	Sample No.	Confirmation	MA	Recommendations
Vinyl Floor Tiles & Bitumen	--N\A--	Medium Damage	Composite materials containing asbestos	Chrysotile	AMB20200319006	Sample Taken	4	Priority 1 : Remove ACM's Prior to Refurbishment or Demolition.

Risk Assessment	375026	Location	RA:375026 Our Lady's Farmyard Shed Roof				
------------------------	--------	-----------------	---	--	--	--	--

Type of Product	Quantity	Condition	Surface Treatment	Asbestos Type	Sample No.	Confirmation	MA	Recommendations
Asbestos Cement	--N\A--	Low Damage	Asbestos cement sheets	Chrysotile	AMB20200319002	Sample Taken	4	Priority 1 : Remove ACM's Prior to Refurbishment or Demolition.

Risk Assessment	375027	Location	RA:375027 Our Lady's Farmyard Ground				
------------------------	--------	-----------------	--------------------------------------	--	--	--	--

Type of Product	Quantity	Condition	Surface Treatment	Asbestos Type	Sample No.	Confirmation	MA	Recommendations
Asbestos Cement	--N\A--	Low Damage	Asbestos cement sheets	Chrysotile		Strongly presumed	4	Priority 1 : Remove ACM's Prior to Refurbishment or Demolition.

Risk Assessment	375028	Location	RA:375028 Our Lady's Farmyard Ground				
------------------------	--------	-----------------	--------------------------------------	--	--	--	--

Type of Product	Quantity	Condition	Surface Treatment	Asbestos Type	Sample No.	Confirmation	MA	Recommendations
Asbestos Cement	--N\A--	Low Damage	Asbestos cement sheets	Chrysotile		Strongly presumed	4	Priority 1 : Remove ACM's Prior to Refurbishment or Demolition.



Customer
Site
Survey Date
Valid Until
Commissioned by

Land Development Agency
 Our Ladys Buildings
 5/3/2020
 5/3/2021
 Land Development Agency

Type
Report Number
Surveyor
Review Date
Method

Refurbishment
 29173
 Anthony Maunsell
 5/3/2021
 WI-02 & WI-03



ACM REGISTER

The following areas were found to contain ACM's

Risk Assessment	375029	Location	RA:375029 Our Lady's Farmyard Office Floor				
------------------------	--------	-----------------	--	--	--	--	--

Type of Product	Quantity	Condition	Surface Treatment	Asbestos Type	Sample No.	Confirmation	MA	Recommendations
Vinyl Floor Tiles & Bitumen	--N\A--	Low Damage	Composite materials containing asbestos	Chrysotile	AMB20200319003	Sample Taken	3	Priority 1 : Remove ACM's Prior to Refurbishment or Demolition.

Risk Assessment	375030	Location	RA:375030 Our Lady's Farmyard Office Floor				
------------------------	--------	-----------------	--	--	--	--	--

Type of Product	Quantity	Condition	Surface Treatment	Asbestos Type	Sample No.	Confirmation	MA	Recommendations
Vinyl Floor Tiles & Bitumen	--N\A--	Low Damage	Composite materials containing asbestos	Chrysotile		Strongly presumed	3	Priority 1 : Remove ACM's Prior to Refurbishment or Demolition.

Risk Assessment	372647	Location	RA:372647 St Kevin's Side Entrance Floor				
------------------------	--------	-----------------	--	--	--	--	--

Type of Product	Quantity	Condition	Surface Treatment	Asbestos Type	Sample No.	Confirmation	MA	Recommendations
Vinyl Floor Tiles & Bitumen	--N\A--	Low Damage	Composite materials containing asbestos	Chrysotile	AMB20200305003	Sample Taken	3	Priority 1 : Remove ACM's Prior to Refurbishment or Demolition.

Risk Assessment	372650	Location	RA:372650 St Kevin's Stairs Floor				
------------------------	--------	-----------------	-----------------------------------	--	--	--	--

Type of Product	Quantity	Condition	Surface Treatment	Asbestos Type	Sample No.	Confirmation	MA	Recommendations
Vinyl Floor Tiles & Bitumen	--N\A--	Low Damage	Composite materials containing asbestos	Chrysotile		Strongly presumed	3	Priority 1 : Remove ACM's Prior to Refurbishment or Demolition.



Customer
Site
Survey Date
Valid Until
Commissioned by

Land Development Agency
 Our Ladys Buildings
 5/3/2020
 5/3/2021
 Land Development Agency

Type
Report Number
Surveyor
Review Date
Method

Refurbishment
 29173
 Anthony Maunsell
 5/3/2021
 WI-02 & WI-03



ACM REGISTER

The following areas were found to contain ACM's

Risk Assessment	372657	Location	RA:372657 St Kevin's Stairs Floor				
------------------------	--------	-----------------	-----------------------------------	--	--	--	--

Type of Product	Quantity	Condition	Surface Treatment	Asbestos Type	Sample No.	Confirmation	MA	Recommendations
Vinyl Floor Tiles & Bitumen	--N\A--	Low Damage	Composite materials containing asbestos	Chrysotile		Strongly presumed	3	Priority 1 : Remove ACM's Prior to Refurbishment or Demolition.

Risk Assessment	375054	Location	RA:375054 Administration Block Side Internal Floor				
------------------------	--------	-----------------	--	--	--	--	--

Type of Product	Quantity	Condition	Surface Treatment	Asbestos Type	Sample No.	Confirmation	MA	Recommendations
Vinyl Floor Tiles	--N\A--	Low Damage	Composite materials containing asbestos	Chrysotile	AMB20200319008	--N\A--	3	Priority 1 : Remove ACM's Prior to Refurbishment or Demolition.

Client and Survey Details

Client : Land Development Agency	Date of Survey : 05 Mar 2020
Site : Our Ladys Buildings	Review Survey : 05 Mar 2021
Address : Our Ladys Buildings	Surveyor : Anthony Maunsell
Lee Road	Method : WI-02 & WI-03
Cork	Report No. : 29173

Location Details

Building/Area : St Kevin's	Sample No. : AMB20200305004
Room/Section : Fire Doors	Confirmation : Sample Taken
Location : Internal	Access : Full Access
Description : AIB	Normal Use :

Material Risk Assessment 372648

	Score	Risk Rating
Asbestos Type : Chrysotile & Amosite	2	High Risk
Type Of Product : Asbestos Insulation Board	2	Medium Risk
Condition : High Damage	3	Low Risk
Surface Treatment : Unsealed asbestos insulation boards	3	Very Low Risk
Quantity : --N\A--		
Material Assessment Score :	10	High Risk

Removal/Encapsulation Estimate

To be completed by the estimating contractor

	Costs	Notes
Labour		
Equipment		
Disposal		
Analytical		
Totals		

Photograph



Recommendations and Notes

Priority 1 : Remove ACM's Prior to Refurbishment or Demolition.

Client and Survey Details

Client : Land Development Agency	Date of Survey : 05 Mar 2020
Site : Our Ladys Buildings	Review Survey : 05 Mar 2021
Address : Our Ladys Buildings	Surveyor : Anthony Maunsell
Lee Road	Method : WI-02 & WI-03
Cork	Report No. : 29173

Location Details

Building/Area : St Kevins	Sample No. :
Room/Section : Basement	Confirmation : Strongly presumed
Location : Panel	Access : Full Access
Description : AIB	Normal Use :

Material Risk Assessment 375038

	Score	Risk Rating
Asbestos Type : Chrysotile	1	High Risk
Type Of Product : Asbestos Insulation Board	2	Medium Risk
Condition : Low Damage	1	Low Risk
Surface Treatment : Unsealed asbestos insulation boards	3	Very Low Risk
Quantity : --N\A--		
Material Assessment Score :	7	Medium Risk

Removal/Encapsulation Estimate

To be completed by the estimating contractor

	Costs	Notes
Labour		
Equipment		
Disposal		
Analytical		
Totals		

Photograph



Recommendations and Notes

Priority 1 : Remove ACM's Prior to Refurbishment or Demolition.

Client and Survey Details

Client : Land Development Agency	Date of Survey : 05 Mar 2020
Site : Our Ladys Buildings	Review Survey : 05 Mar 2021
Address : Our Ladys Buildings	Surveyor : Anthony Maunsell
Lee Road	Method : WI-02 & WI-03
Cork	Report No. : 29173

Location Details

Building/Area : Administration Block	Sample No. :
Room/Section : Rear Oil Tank	Confirmation : Strongly presumed
Location : Lean too Ground	Access : Full Access
Description : Asbestos Cement Slates	Normal Use :

Material Risk Assessment 375048

	Score	Risk Rating
Asbestos Type : Chrysotile & Amosite	2	High Risk
Type Of Product : Asbestos Cement	1	Medium Risk
Condition : High Damage	3	Low Risk
Surface Treatment : Asbestos cement sheets	1	Very Low Risk
Quantity : --N\A--		
Material Assessment Score :	7	Medium Risk

Removal/Encapsulation Estimate

To be completed by the estimating contractor

	Costs	Notes
Labour		
Equipment		
Disposal		
Analytical		
Totals		

Photograph



Recommendations and Notes

Priority 1 : Remove ACM's Prior to Refurbishment or Demolition.

Client and Survey Details

Client : Land Development Agency	Date of Survey : 05 Mar 2020
Site : Our Ladys Buildings	Review Survey : 05 Mar 2021
Address : Our Ladys Buildings	Surveyor : Anthony Maunsell
Lee Road	Method : WI-02 & WI-03
Cork	Report No. : 29173

Location Details

Building/Area : Our Lady's	Sample No. : AMB20200319004
Room/Section : Church Basement	Confirmation : Sample Taken
Location : Boiler	Access : Full Access
Description : Rope Seals	Normal Use :

Material Risk Assessment 375035

	Score	Risk Rating
Asbestos Type : Chrysotile	1	High Risk
Type Of Product : Asbestos Rope	2	Medium Risk
Condition : Low Damage	1	Low Risk
Surface Treatment : Gasket	2	Very Low Risk
Quantity : --N\A--		
Material Assessment Score :	6	Low Risk

Removal/Encapsulation Estimate

To be completed by the estimating contractor

	Costs	Notes
Labour		
Equipment		
Disposal		
Analytical		
Totals		

Photograph



Recommendations and Notes

Priority 1 : Remove ACM's Prior to Refurbishment or Demolition.

Client and Survey Details

Client : Land Development Agency	Date of Survey : 05 Mar 2020
Site : Our Ladys Buildings	Review Survey : 05 Mar 2021
Address : Our Ladys Buildings	Surveyor : Anthony Maunsell
Lee Road	Method : WI-02 & WI-03
Cork	Report No. : 29173

Location Details

Building/Area : St Kevins	Sample No. :
Room/Section : Basement	Confirmation : Strongly Presumed
Location : Boiler	Access : Full Access
Description : Pipework Flanges	Normal Use :

Material Risk Assessment 375036

	Score	Risk Rating
Asbestos Type : Chrysotile	1	High Risk
Type Of Product : Asbestos Paper	2	Medium Risk
Condition : Low Damage	1	Low Risk
Surface Treatment : Gasket	2	Very Low Risk
Quantity : --N\A--		
Material Assessment Score :	6	Low Risk

Removal/Encapsulation Estimate

To be completed by the estimating contractor

	Costs	Notes
Labour		
Equipment		
Disposal		
Analytical		
Totals		

Photograph



Recommendations and Notes

Priority 1 : Remove ACM's Prior to Refurbishment or Demolition.

Unit 2BEaT Centre, Stephenstown Industrial Estate, Balbriggan, Co. Dublin Tel: (01) 6905907 Fax: (01) 8020439 Email: info@ohss.ie Website: www.ohss.ie

Client and Survey Details

Client : Land Development Agency

Date of Survey : 05 Mar 2020

Site : Our Ladys Buildings

Review Survey : 05 Mar 2021

Address : Our Ladys Buildings

Surveyor : Anthony Maunsell

Lee Road

Method : WI-02 & WI-03

Cork

Report No. : 29173

Location Details

Building/Area : St Kevins

Sample No. :

Room/Section : Basement

Confirmation : Strongly presumed

Location : Pipework Flanges

Access : Full Access

Description : Asbestos Paper Gasket

Normal Use :

Material Risk Assessment 375037

	Score	Risk Rating
Asbestos Type : Chrysotile	1	High Risk
Type Of Product : Asbestos Rope	2	Medium Risk
Condition : Low Damage	1	Low Risk
Surface Treatment : Gasket	2	Very Low Risk
Quantity : --N\A--		
Material Assessment Score :	6	Low Risk

Removal/Encapsulation Estimate

To be completed by the estimating contractor

	Costs	Notes
Labour		
Equipment		
Disposal		
Analytical		
Totals		

Photograph



Recommendations and Notes

Priority 1 : Remove ACM's Prior to Refurbishment or Demolition.

While every effort was taken to insure the accuracy of this report we do not accept responsibility for any omissions or areas of the building not addressed in the report. This report is intended to assist in reducing the possibility of accidents and ill health by bringing to the client's attention identified asbestos containing materials. It is not implied that all other hazards are under control at the time of inspections.

Unit 2BEaT Centre, Stephenstown Industrial Estate, Balbriggan, Co. Dublin Tel: (01) 6905907 Fax: (01) 8020439 Email: info@ohss.ie Website: www.ohss.ie

Client and Survey Details

Client : Land Development Agency	Date of Survey : 05 Mar 2020
Site : Our Ladys Buildings	Review Survey : 05 Mar 2021
Address : Our Ladys Buildings	Surveyor : Anthony Maunsell
Lee Road	Method : WI-02 & WI-03
Cork	Report No. : 29173

Location Details

Building/Area : Administration Block	Sample No. :
Room/Section : Rear Boiler	Confirmation : Strongly presumed
Location : Rope Seals	Access : Full Access
Description : Asbestos Rope	Normal Use :

Material Risk Assessment 375052

	Score	Risk Rating
Asbestos Type : Chrysotile	1	High Risk
Type Of Product : Asbestos Rope	2	Medium Risk
Condition : Low Damage	1	Low Risk
Surface Treatment : Gasket	2	Very Low Risk
Quantity : --N\A--		
Material Assessment Score :	6	Low Risk

Removal/Encapsulation Estimate

To be completed by the estimating contractor

	Costs	Notes
Labour		
Equipment		
Disposal		
Analytical		
Totals		

Photograph



Recommendations and Notes

Priority 1 : Remove ACM's Prior to Refurbishment or Demolition.

While every effort was taken to insure the accuracy of this report we do not accept responsibility for any omissions or areas of the building not addressed in the report. This report is intended to assist in reducing the possibility of accidents and ill health by bringing to the client's attention identified asbestos containing materials. It is not implied that all other hazards are under control at the time of inspections.

Client and Survey Details

Client : Land Development Agency	Date of Survey : 05 Mar 2020
Site : Our Ladys Buildings	Review Survey : 05 Mar 2021
Address : Our Ladys Buildings	Surveyor : Anthony Maunsell
Lee Road	Method : WI-02 & WI-03
Cork	Report No. : 29173

Location Details

Building/Area : Administration Block	Sample No. : AMB20200319005
Room/Section : Rear Oil Tank	Confirmation : Sample Taken
Location : Lean too Roof	Access : Full Access
Description : Asbestos Cement Slates	Normal Use :

Material Risk Assessment 375047

	Score	Risk Rating
Asbestos Type : Chrysotile & Amosite	2	High Risk
Type Of Product : Asbestos Cement	1	Medium Risk
Condition : Medium Damage	2	Low Risk
Surface Treatment : Asbestos cement sheets	1	Very Low Risk
Quantity : --N\A--		
Material Assessment Score :	6	Low Risk

Removal/Encapsulation Estimate

To be completed by the estimating contractor

	Costs	Notes
Labour		
Equipment		
Disposal		
Analytical		
Totals		

Photograph



Recommendations and Notes

Priority 1 : Remove ACM's Prior to Refurbishment or Demolition.

Client and Survey Details

Client : Land Development Agency	Date of Survey : 05 Mar 2020
Site : Our Ladys Buildings	Review Survey : 05 Mar 2021
Address : Our Ladys Buildings	Surveyor : Anthony Maunsell
Lee Road	Method : WI-02 & WI-03
Cork	Report No. : 29173

Location Details

Building/Area : Administration Block	Sample No. : AMB20200319006
Room/Section : Rear Oil Tank	Confirmation : Sample Taken
Location : Corridor Floor	Access : Full Access
Description : Vinyl Floor Tiles and Bitumen	Normal Use :

Material Risk Assessment 375049

	Score	Risk Rating
Asbestos Type : Chrysotile	1	High Risk
Type Of Product : Vinyl Floor Tiles & Bitumen	1	Medium Risk
Condition : Medium Damage	2	Low Risk
Surface Treatment : Composite materials containing asbestos	0	Very Low Risk
Quantity : --N\A--		
Material Assessment Score :	4	Very Low Risk

Removal/Encapsulation Estimate

To be completed by the estimating contractor

	Costs	Notes
Labour		
Equipment		
Disposal		
Analytical		
Totals		

Photograph



Recommendations and Notes

Priority 1 : Remove ACM's Prior to Refurbishment or Demolition.

Client and Survey Details

Client : Land Development Agency	Date of Survey : 05 Mar 2020
Site : Our Ladys Buildings	Review Survey : 05 Mar 2021
Address : Our Ladys Buildings	Surveyor : Anthony Maunsell
Lee Road	Method : WI-02 & WI-03
Cork	Report No. : 29173

Location Details

Building/Area : Our Lady's	Sample No. : AMB20200319002
Room/Section : Farmyard	Confirmation : Sample Taken
Location : Shed Roof	Access : Full Access
Description : Asbestos Cement Sheeting	Normal Use :

Material Risk Assessment 375026

	Score	Risk Rating
Asbestos Type : Chrysotile	1	High Risk
Type Of Product : Asbestos Cement	1	Medium Risk
Condition : Low Damage	1	Low Risk
Surface Treatment : Asbestos cement sheets	1	Very Low Risk
Quantity : --N\A--		
Material Assessment Score :	4	Very Low Risk

Removal/Encapsulation Estimate

To be completed by the estimating contractor

	Costs	Notes
Labour		
Equipment		
Disposal		
Analytical		
Totals		

Photograph



Recommendations and Notes

Priority 1 : Remove ACM's Prior to Refurbishment or Demolition.

Unit 2BEaT Centre, Stephenstown Industrial Estate, Balbriggan, Co. Dublin Tel: (01) 6905907 Fax: (01) 8020439 Email: info@ohss.ie Website: www.ohss.ie

Client and Survey Details

Client : Land Development Agency

Site : Our Ladys Buildings

Address : Our Ladys Buildings

Lee Road

Cork

Date of Survey : 05 Mar 2020

Review Survey : 05 Mar 2021

Surveyor : Anthony Maunsell

Method : WI-02 & WI-03

Report No. : 29173

Location Details

Building/Area : Our Lady's

Room/Section : Farmyard

Location : Ground

Description : Asbestos Cement Sheeting

Sample No. :

Confirmation : Strongly presumed

Access : Full Access

Normal Use :

Material Risk Assessment 375027

	Score	Risk Rating
Asbestos Type : Chrysotile	1	High Risk
Type Of Product : Asbestos Cement	1	Medium Risk
Condition : Low Damage	1	Low Risk
Surface Treatment : Asbestos cement sheets	1	Very Low Risk
Quantity : --N\A--		
Material Assessment Score :	4	Very Low Risk

Removal/Encapsulation Estimate

To be completed by the estimating contractor

	Costs	Notes
Labour		
Equipment		
Disposal		
Analytical		
Totals		

Photograph



Recommendations and Notes

Priority 1 : Remove ACM's Prior to Refurbishment or Demolition.

While every effort was taken to insure the accuracy of this report we do not accept responsibility for any omissions or areas of the building not addressed in the report. This report is intended to assist in reducing the possibility of accidents and ill health by bringing to the client's attention identified asbestos containing materials. It is not implied that all other hazards are under control at the time of inspections.

Client and Survey Details

Client : Land Development Agency	Date of Survey : 05 Mar 2020
Site : Our Ladys Buildings	Review Survey : 05 Mar 2021
Address : Our Ladys Buildings	Surveyor : Anthony Maunsell
Lee Road	Method : WI-02 & WI-03
Cork	Report No. : 29173

Location Details

Building/Area : Our Lady's	Sample No. :
Room/Section : Farmyard	Confirmation : Strongly presumed
Location : Ground	Access : Full Access
Description : Asbestos Cement Sheeting	Normal Use :

Material Risk Assessment 375028

	Score	Risk Rating
Asbestos Type : Chrysotile	1	High Risk
Type Of Product : Asbestos Cement	1	Medium Risk
Condition : Low Damage	1	Low Risk
Surface Treatment : Asbestos cement sheets	1	Very Low Risk
Quantity : --N\A--		
Material Assessment Score :	4	Very Low Risk

Removal/Encapsulation Estimate

To be completed by the estimating contractor

	Costs	Notes
Labour		
Equipment		
Disposal		
Analytical		
Totals		

Photograph



Recommendations and Notes

Priority 1 : Remove ACM's Prior to Refurbishment or Demolition.

Client and Survey Details

Client : Land Development Agency	Date of Survey : 05 Mar 2020
Site : Our Ladys Buildings	Review Survey : 05 Mar 2021
Address : Our Ladys Buildings	Surveyor : Anthony Maunsell
Lee Road	Method : WI-02 & WI-03
Cork	Report No. : 29173

Location Details

Building/Area : Our Lady's	Sample No. : AMB20200319003
Room/Section : Farmyard	Confirmation : Sample Taken
Location : Office Floor	Access : Full Access
Description : Vinyl Floor Tiles	Normal Use :

Material Risk Assessment 375029

	Score	Risk Rating
Asbestos Type : Chrysotile	1	High Risk
Type Of Product : Vinyl Floor Tiles & Bitumen	1	Medium Risk
Condition : Low Damage	1	Low Risk
Surface Treatment : Composite materials containing asbestos	0	Very Low Risk
Quantity : --N\A--		
Material Assessment Score :	3	Very Low Risk

Removal/Encapsulation Estimate

To be completed by the estimating contractor

	Costs	Notes
Labour		
Equipment		
Disposal		
Analytical		
Totals		

Photograph



Recommendations and Notes

Priority 1 : Remove ACM's Prior to Refurbishment or Demolition.

Client and Survey Details

Client : Land Development Agency	Date of Survey : 05 Mar 2020
Site : Our Ladys Buildings	Review Survey : 05 Mar 2021
Address : Our Ladys Buildings	Surveyor : Anthony Maunsell
Lee Road	Method : WI-02 & WI-03
Cork	Report No. : 29173

Location Details

Building/Area : Our Lady's	Sample No. :
Room/Section : Farmyard	Confirmation : Strongly presumed
Location : Office Floor	Access : Full Access
Description : Vinyl Floor Tiles	Normal Use :

Material Risk Assessment 375030

	Score	Risk Rating
Asbestos Type : Chrysotile	1	High Risk
Type Of Product : Vinyl Floor Tiles & Bitumen	1	Medium Risk
Condition : Low Damage	1	Low Risk
Surface Treatment : Composite materials containing asbestos	0	Very Low Risk
Quantity : --N\A--		
Material Assessment Score :	3	Very Low Risk

Removal/Encapsulation Estimate

To be completed by the estimating contractor

	Costs	Notes
Labour		
Equipment		
Disposal		
Analytical		
Totals		

Photograph



Recommendations and Notes

Priority 1 : Remove ACM's Prior to Refurbishment or Demolition.

Client and Survey Details

Client : Land Development Agency	Date of Survey : 05 Mar 2020
Site : Our Ladys Buildings	Review Survey : 05 Mar 2021
Address : Our Ladys Buildings	Surveyor : Anthony Maunsell
Lee Road	Method : WI-02 & WI-03
Cork	Report No. : 29173

Location Details

Building/Area : St Kevin's	Sample No. : AMB20200305003
Room/Section : Side Entrance	Confirmation : Sample Taken
Location : Floor	Access : Full Access
Description : Vinyl Floor Tiles and Bitumen	Normal Use :

Material Risk Assessment 372647

	Score	Risk Rating
Asbestos Type : Chrysotile	1	High Risk
Type Of Product : Vinyl Floor Tiles & Bitumen	1	Medium Risk
Condition : Low Damage	1	Low Risk
Surface Treatment : Composite materials containing asbestos	0	Very Low Risk
Quantity : --N\A--		
Material Assessment Score :	3	Very Low Risk

Removal/Encapsulation Estimate

To be completed by the estimating contractor

	Costs	Notes
Labour		
Equipment		
Disposal		
Analytical		
Totals		

Photograph



Recommendations and Notes

Priority 1 : Remove ACM's Prior to Refurbishment or Demolition.

Client and Survey Details

Client : Land Development Agency

Site : Our Ladys Buildings

Address : Our Ladys Buildings

Lee Road

Cork

Date of Survey : 05 Mar 2020

Review Survey : 05 Mar 2021

Surveyor : Anthony Maunsell

Method : WI-02 & WI-03

Report No. : 29173

Location Details

Building/Area : St Kevin's

Room/Section : Stairs

Location : Floor

Description : Vinyl Floor Tiles and Bitumen

Sample No. :

Confirmation : Strongly presumed

Access : Full Access

Normal Use :

Material Risk Assessment 372650

	Score	Risk Rating
Asbestos Type : Chrysotile	1	High Risk
Type Of Product : Vinyl Floor Tiles & Bitumen	1	Medium Risk
Condition : Low Damage	1	Low Risk
Surface Treatment : Composite materials containing asbestos	0	Very Low Risk
Quantity : --N\A--		
Material Assessment Score :	3	Very Low Risk

Removal/Encapsulation Estimate

To be completed by the estimating contractor

	Costs	Notes
Labour		
Equipment		
Disposal		
Analytical		
Totals		

Photograph



Recommendations and Notes

Priority 1 : Remove ACM's Prior to Refurbishment or Demolition.

Client and Survey Details

Client : Land Development Agency

Site : Our Ladys Buildings

Address : Our Ladys Buildings

Lee Road

Cork

Date of Survey : 05 Mar 2020

Review Survey : 05 Mar 2021

Surveyor : Anthony Maunsell

Method : WI-02 & WI-03

Report No. : 29173

Location Details

Building/Area : St Kevin's

Room/Section : Stairs

Location : Floor

Description : Vinyl Floor Tiles and Bitumen

Sample No. :

Confirmation : Strongly presumed

Access : Full Access

Normal Use :

Material Risk Assessment 372657

	Score	Risk Rating
Asbestos Type : Chrysotile	1	High Risk
Type Of Product : Vinyl Floor Tiles & Bitumen	1	Medium Risk
Condition : Low Damage	1	Low Risk
Surface Treatment : Composite materials containing asbestos	0	Very Low Risk
Quantity : --N\A--		
Material Assessment Score :	3	Very Low Risk

Removal/Encapsulation Estimate

To be completed by the estimating contractor

	Costs	Notes
Labour		
Equipment		
Disposal		
Analytical		
Totals		

Photograph



Recommendations and Notes

Priority 1 : Remove ACM's Prior to Refurbishment or Demolition.

Client and Survey Details

Client : Land Development Agency	Date of Survey : 05 Mar 2020
Site : Our Ladys Buildings	Review Survey : 05 Mar 2021
Address : Our Ladys Buildings	Surveyor : Anthony Maunsell
Lee Road	Method : WI-02 & WI-03
Cork	Report No. : 29173

Location Details

Building/Area : Administration Block	Sample No. : AMB20200319008
Room/Section : Side Internal	Confirmation : --N\A--
Location : Floor	Access : Full Access
Description : Vinyl Floor Tiles	Normal Use :

Material Risk Assessment 375054

	Score	Risk Rating
Asbestos Type : Chrysotile	1	High Risk
Type Of Product : Vinyl Floor Tiles	1	Medium Risk
Condition : Low Damage	1	Low Risk
Surface Treatment : Composite materials containing asbestos	0	Very Low Risk
Quantity : --N\A--		
Material Assessment Score :	3	Very Low Risk

Removal/Encapsulation Estimate

To be completed by the estimating contractor

	Costs	Notes
Labour		
Equipment		
Disposal		
Analytical		
Totals		

Photograph



Recommendations and Notes

Priority 1 : Remove ACM's Prior to Refurbishment or Demolition.



Customer
Site
Survey Date
Valid Until
Commissioned by

Land Development Agency
 Our Ladys Buildings
 5/3/2020
 5/3/2021
 Land Development Agency

Type
Report Number
Surveyor
Review Date
Method

Refurbishment
 29173
 Anthony Maunsell
 5/3/2021
 WI-02 & WI-03



INCOMPLETE ACCESS REGISTER

The following areas could not be accessed and therefore in accordance with HSG264 should be presumed to contain ACM's.

Risk Assessment	375055	Location	RA:375055 Administration Block Internal		
------------------------	--------	-----------------	---	--	--

Type of Product	Quantity	Condition	Surface Treatment	Asbestos Type	Sample No.	Confirmation	MA	Recommendations
--N\A--	--N\A--	--N\A--	--N\A--	--N\A--		--N\A--	0	--N\A--

Risk Assessment	375056	Location	RA:375056 Administration Block Internal		
------------------------	--------	-----------------	---	--	--

Type of Product	Quantity	Condition	Surface Treatment	Asbestos Type	Sample No.	Confirmation	MA	Recommendations
--N\A--	--N\A--	--N\A--	--N\A--	--N\A--		--N\A--	0	--N\A--

Risk Assessment	375057	Location	RA:375057 Administration Block Internal		
------------------------	--------	-----------------	---	--	--

Type of Product	Quantity	Condition	Surface Treatment	Asbestos Type	Sample No.	Confirmation	MA	Recommendations
--N\A--	--N\A--	--N\A--	--N\A--	--N\A--		--N\A--	0	--N\A--

Risk Assessment	375058	Location	RA:375058 Workshop Internal		
------------------------	--------	-----------------	-----------------------------	--	--

Type of Product	Quantity	Condition	Surface Treatment	Asbestos Type	Sample No.	Confirmation	MA	Recommendations
--N\A--	--N\A--	--N\A--	--N\A--	--N\A--		--N\A--	0	--N\A--



Customer
Site
Survey Date
Valid Until
Commissioned by

Land Development Agency
 Our Ladys Buildings
 5/3/2020
 5/3/2021
 Land Development Agency

Type
Report Number
Surveyor
Review Date
Method

Refurbishment
 29173
 Anthony Maunsell
 5/3/2021
 WI-02 & WI-03



INCOMPLETE ACCESS REGISTER

The following areas could not be accessed and therefore in accordance with HSG264 should be presumed to contain ACM's.

Risk Assessment	375053	Location	RA:375053 Administration Block Internal		
------------------------	--------	-----------------	---	--	--

Type of Product	Quantity	Condition	Surface Treatment	Asbestos Type	Sample No.	Confirmation	MA	Recommendations
--N\A--	--N\A--	--N\A--	--N\A--	--N\A--		--N\A--	0	--N\A--

Risk Assessment	372651	Location	RA:372651 St Kevin's 1st Floor All Walls Floor and Ceiling		
------------------------	--------	-----------------	--	--	--

Type of Product	Quantity	Condition	Surface Treatment	Asbestos Type	Sample No.	Confirmation	MA	Recommendations
--N\A--	--N\A--	--N\A--	--N\A--	--N\A--		--N\A--	0	--N\A--

Risk Assessment	372652	Location	RA:372652 St Kevin's 2nd Floor All Walls Floor and Ceiling		
------------------------	--------	-----------------	--	--	--

Type of Product	Quantity	Condition	Surface Treatment	Asbestos Type	Sample No.	Confirmation	MA	Recommendations
--N\A--	--N\A--	--N\A--	--N\A--	--N\A--		--N\A--	0	--N\A--

Risk Assessment	372653	Location	RA:372653 St Kevin's Top Floor All Walls Floor and Ceiling		
------------------------	--------	-----------------	--	--	--

Type of Product	Quantity	Condition	Surface Treatment	Asbestos Type	Sample No.	Confirmation	MA	Recommendations
--N\A--	--N\A--	--N\A--	--N\A--	--N\A--		--N\A--	0	--N\A--



Customer
Site
Survey Date
Valid Until
Commissioned by

Land Development Agency
 Our Ladys Buildings
 5/3/2020
 5/3/2021
 Land Development Agency

Type
Report Number
Surveyor
Review Date
Method

Refurbishment
 29173
 Anthony Maunsell
 5/3/2021
 WI-02 & WI-03



INCOMPLETE ACCESS REGISTER

The following areas could not be accessed and therefore in accordance with HSG264 should be presumed to contain ACM's.

Risk Assessment	372654	Location	RA:372654 St Kevin's Top Floor All Walls Floor and Ceiling					
------------------------	--------	-----------------	--	--	--	--	--	--

Type of Product	Quantity	Condition	Surface Treatment	Asbestos Type	Sample No.	Confirmation	MA	Recommendations
--N\A--	--N\A--	--N\A--	--N\A--	--N\A--		--N\A--	0	--N\A--

Risk Assessment	372655	Location	RA:372655 St Kevin's Side Basement All Walls Floor and Ceiling					
------------------------	--------	-----------------	--	--	--	--	--	--

Type of Product	Quantity	Condition	Surface Treatment	Asbestos Type	Sample No.	Confirmation	MA	Recommendations
--N\A--	--N\A--	--N\A--	--N\A--	--N\A--		--N\A--	0	--N\A--

Risk Assessment	372656	Location	RA:372656 St Kevin's Basement All Walls Floor and Ceiling					
------------------------	--------	-----------------	---	--	--	--	--	--

Type of Product	Quantity	Condition	Surface Treatment	Asbestos Type	Sample No.	Confirmation	MA	Recommendations
--N\A--	--N\A--	--N\A--	--N\A--	--N\A--		--N\A--	0	--N\A--

Risk Assessment	372649	Location	RA:372649 St Kevin's Ground Floor All Walls Floor and Ceiling					
------------------------	--------	-----------------	---	--	--	--	--	--

Type of Product	Quantity	Condition	Surface Treatment	Asbestos Type	Sample No.	Confirmation	MA	Recommendations
--N\A--	--N\A--	--N\A--	--N\A--	--N\A--		--N\A--	0	--N\A--



Customer
Site
Survey Date
Valid Until
Commissioned by

Land Development Agency
 Our Ladys Buildings
 5/3/2020
 5/3/2021
 Land Development Agency

Type
Report Number
Surveyor
Review Date
Method

Refurbishment
 29173
 Anthony Maunsell
 5/3/2021
 WI-02 & WI-03



INCOMPLETE ACCESS REGISTER

The following areas could not be accessed and therefore in accordance with HSG264 should be presumed to contain ACM's.

Risk Assessment	375031	Location	RA:375031 Our Lady's Farmyard Front Building		
------------------------	--------	-----------------	--	--	--

Type of Product	Quantity	Condition	Surface Treatment	Asbestos Type	Sample No.	Confirmation	MA	Recommendations
--N\A--	--N\A--	--N\A--	--N\A--	--N\A--		--N\A--	0	--N\A--

Risk Assessment	375040	Location	RA:375040 Administration Block Internal		
------------------------	--------	-----------------	---	--	--

Type of Product	Quantity	Condition	Surface Treatment	Asbestos Type	Sample No.	Confirmation	MA	Recommendations
--N\A--	--N\A--	--N\A--	--N\A--	--N\A--		--N\A--	0	--N\A--

Risk Assessment	375042	Location	RA:375042 House Internal		
------------------------	--------	-----------------	--------------------------	--	--

Type of Product	Quantity	Condition	Surface Treatment	Asbestos Type	Sample No.	Confirmation	MA	Recommendations
--N\A--	--N\A--	--N\A--	--N\A--	--N\A--		--N\A--	0	--N\A--

Risk Assessment	375043	Location	RA:375043 Administration Block Rear Internal		
------------------------	--------	-----------------	--	--	--

Type of Product	Quantity	Condition	Surface Treatment	Asbestos Type	Sample No.	Confirmation	MA	Recommendations
--N\A--	--N\A--	--N\A--	--N\A--	--N\A--		--N\A--	0	--N\A--



Customer
Site
Survey Date
Valid Until
Commissioned by

Land Development Agency
 Our Ladys Buildings
 5/3/2020
 5/3/2021
 Land Development Agency

Type
Report Number
Surveyor
Review Date
Method

Refurbishment
 29173
 Anthony Maunsell
 5/3/2021
 WI-02 & WI-03



INCOMPLETE ACCESS REGISTER

The following areas could not be accessed and therefore in accordance with HSG264 should be presumed to contain ACM's.

Risk Assessment	375044	Location	RA:375044 Administration Block Rear Internal		
------------------------	--------	-----------------	--	--	--

Type of Product	Quantity	Condition	Surface Treatment	Asbestos Type	Sample No.	Confirmation	MA	Recommendations
--N\A--	--N\A--	--N\A--	--N\A--	--N\A--		--N\A--	0	--N\A--

Risk Assessment	375045	Location	RA:375045 Administration Block Rear Internal		
------------------------	--------	-----------------	--	--	--

Type of Product	Quantity	Condition	Surface Treatment	Asbestos Type	Sample No.	Confirmation	MA	Recommendations
--N\A--	--N\A--	--N\A--	--N\A--	--N\A--		--N\A--	0	--N\A--

Risk Assessment	375046	Location	RA:375046 Administration Block Rear Internal		
------------------------	--------	-----------------	--	--	--

Type of Product	Quantity	Condition	Surface Treatment	Asbestos Type	Sample No.	Confirmation	MA	Recommendations
--N\A--	--N\A--	--N\A--	--N\A--	--N\A--		--N\A--	0	--N\A--

Unit 2BEaT Centre, Stephenstown Industrial Estate, Balbriggan, Co. Dublin Tel: (01) 6905907 Fax: (01) 8020439 Email: info@ohss.ie Website: www.ohss.ie

Client and Survey Details

Client : Land Development Agency
 Site : Our Ladys Buildings
 Address : Our Ladys Buildings
 Lee Road
 Cork

Date of Survey : 05 Mar 2020
 Review Survey : 05 Mar 2021
 Surveyor : Anthony Maunsell
 Method : WI-02 & WI-03
 Report No. : 29173

Location Details

Building/Area : Administration Block
 Room/Section : Internal
 Location :
 Description :

Sample No. :
 Confirmation : --N\A--
 Access : No Access
 Normal Use :

Material Risk Assessment 375055

	Score	Risk Rating
Asbestos Type : --N\A--	0	High Risk
Type Of Product : --N\A--	0	Medium Risk
Condition : --N\A--	0	Low Risk
Surface Treatment : --N\A--	0	Very Low Risk
Quantity : --N\A--		
Material Assessment Score :	0	

Removal/Encapsulation Estimate

To be completed by the estimating contractor

	Costs	Notes
Labour		
Equipment		
Disposal		
Analytical		
Totals		

Photograph



Recommendations and Notes

--N\A--

While every effort was taken to insure the accuracy of this report we do not accept responsibility for any omissions or areas of the building not addressed in the report. This report is intended to assist in reducing the possibility of accidents and ill health by bringing to the client's attention identified asbestos containing materials. It is not implied that all other hazards are under control at the time of inspections.

Unit 2BEaT Centre, Stephenstown Industrial Estate, Balbriggan, Co. Dublin Tel: (01) 6905907 Fax: (01) 8020439 Email: info@ohss.ie Website: www.ohss.ie

Client and Survey Details

Client : Land Development Agency

Date of Survey : 05 Mar 2020

Site : Our Ladys Buildings

Review Survey : 05 Mar 2021

Address : Our Ladys Buildings

Surveyor : Anthony Maunsell

Lee Road

Method : WI-02 & WI-03

Cork

Report No. : 29173

Location Details

Building/Area : Administration Block

Sample No. :

Room/Section : Internal

Confirmation : --N\A--

Location :

Access : No Access

Description :

Normal Use :

Material Risk Assessment 375056

	Score	Risk Rating
Asbestos Type : --N\A--	0	High Risk
Type Of Product : --N\A--	0	Medium Risk
Condition : --N\A--	0	Low Risk
Surface Treatment : --N\A--	0	Very Low Risk
Quantity : --N\A--		
Material Assessment Score :	0	

Removal/Encapsulation Estimate

To be completed by the estimating contractor

	Costs	Notes
Labour		
Equipment		
Disposal		
Analytical		
Totals		

Photograph



Recommendations and Notes

--N\A--

While every effort was taken to insure the accuracy of this report we do not accept responsibility for any omissions or areas of the building not addressed in the report. This report is intended to assist in reducing the possibility of accidents and ill health by bringing to the client's attention identified asbestos containing materials. It is not implied that all other hazards are under control at the time of inspections.

Unit 2BEaT Centre, Stephenstown Industrial Estate, Balbriggan, Co. Dublin Tel: (01) 6905907 Fax: (01) 8020439 Email: info@ohss.ie Website: www.ohss.ie

Client and Survey Details

Client : Land Development Agency

Site : Our Ladys Buildings

Address : Our Ladys Buildings

Lee Road

Cork

Date of Survey : 05 Mar 2020

Review Survey : 05 Mar 2021

Surveyor : Anthony Maunsell

Method : WI-02 & WI-03

Report No. : 29173

Location Details

Building/Area : Administration Block

Room/Section : Internal

Location :

Description :

Sample No. :

Confirmation : --N\A--

Access : No Access

Normal Use :

Material Risk Assessment 375057

	Score	Risk Rating
Asbestos Type : --N\A--	0	High Risk
Type Of Product : --N\A--	0	Medium Risk
Condition : --N\A--	0	Low Risk
Surface Treatment : --N\A--	0	Very Low Risk
Quantity : --N\A--		
Material Assessment Score :	0	

Removal/Encapsulation Estimate

To be completed by the estimating contractor

	Costs	Notes
Labour		
Equipment		
Disposal		
Analytical		
Totals		

Photograph



Recommendations and Notes

--N\A--

While every effort was taken to insure the accuracy of this report we do not accept responsibility for any omissions or areas of the building not addressed in the report. This report is intended to assist in reducing the possibility of accidents and ill health by bringing to the client's attention identified asbestos containing materials. It is not implied that all other hazards are under control at the time of inspections.

Unit 2BEaT Centre, Stephenstown Industrial Estate, Balbriggan, Co. Dublin Tel: (01) 6905907 Fax: (01) 8020439 Email: info@ohss.ie Website: www.ohss.ie

Client and Survey Details

Client : Land Development Agency

Site : Our Ladys Buildings

Address : Our Ladys Buildings

Lee Road

Cork

Date of Survey : 05 Mar 2020

Review Survey : 05 Mar 2021

Surveyor : Anthony Maunsell

Method : WI-02 & WI-03

Report No. : 29173

Location Details

Building/Area : Workshop

Room/Section : Internal

Location :

Description :

Sample No. :

Confirmation : --N\A--

Access : No Access

Normal Use :

Material Risk Assessment 375058

	Score	Risk Rating
Asbestos Type : --N\A--	0	High Risk
Type Of Product : --N\A--	0	Medium Risk
Condition : --N\A--	0	Low Risk
Surface Treatment : --N\A--	0	Very Low Risk
Quantity : --N\A--		
Material Assessment Score :	0	

Removal/Encapsulation Estimate

To be completed by the estimating contractor

	Costs	Notes
Labour		
Equipment		
Disposal		
Analytical		
Totals		

Photograph



Recommendations and Notes

--N\A--

While every effort was taken to insure the accuracy of this report we do not accept responsibility for any omissions or areas of the building not addressed in the report. This report is intended to assist in reducing the possibility of accidents and ill health by bringing to the client's attention identified asbestos containing materials. It is not implied that all other hazards are under control at the time of inspections.

Client and Survey Details

Client : Land Development Agency

Site : Our Ladys Buildings

Address : Our Ladys Buildings

Lee Road

Cork

Date of Survey : 05 Mar 2020

Review Survey : 05 Mar 2021

Surveyor : Anthony Maunsell

Method : WI-02 & WI-03

Report No. : 29173

Location Details

Building/Area : Administration Block

Room/Section : Internal

Location :

Description :

Sample No. :

Confirmation : --N\A--

Access : No Access

Normal Use :

Material Risk Assessment 375053

	Score	Risk Rating
Asbestos Type : --N\A--	0	High Risk
Type Of Product : --N\A--	0	Medium Risk
Condition : --N\A--	0	Low Risk
Surface Treatment : --N\A--	0	Very Low Risk
Quantity : --N\A--		
Material Assessment Score :	0	

Removal/Encapsulation Estimate

To be completed by the estimating contractor

	Costs	Notes
Labour		
Equipment		
Disposal		
Analytical		
Totals		

Photograph



Recommendations and Notes

--N\A--

Unit 2BEaT Centre, Stephenstown Industrial Estate, Balbriggan, Co. Dublin Tel: (01) 6905907 Fax: (01) 8020439 Email: info@ohss.ie Website: www.ohss.ie

Client and Survey Details

Client : Land Development Agency

Site : Our Ladys Buildings

Address : Our Ladys Buildings

Lee Road

Cork

Date of Survey : 05 Mar 2020

Review Survey : 05 Mar 2021

Surveyor : Anthony Maunsell

Method : WI-02 & WI-03

Report No. : 29173

Location Details

Building/Area : St Kevin's

Room/Section : 1st Floor

Location : All Walls Floor and Ceiling

Description :

Sample No. :

Confirmation : --N\A--

Access : No Access

Normal Use :

Material Risk Assessment 372651

	Score	Risk Rating
Asbestos Type : --N\A--	0	High Risk
Type Of Product : --N\A--	0	Medium Risk
Condition : --N\A--	0	Low Risk
Surface Treatment : --N\A--	0	Very Low Risk
Quantity : --N\A--		
Material Assessment Score :	0	

Removal/Encapsulation Estimate

To be completed by the estimating contractor

	Costs	Notes
Labour		
Equipment		
Disposal		
Analytical		
Totals		

Photograph



Recommendations and Notes

--N\A--

While every effort was taken to insure the accuracy of this report we do not accept responsibility for any omissions or areas of the building not addressed in the report. This report is intended to assist in reducing the possibility of accidents and ill health by bringing to the client's attention identified asbestos containing materials. It is not implied that all other hazards are under control at the time of inspections.

Unit 2BEaT Centre, Stephenstown Industrial Estate, Balbriggan, Co. Dublin Tel: (01) 6905907 Fax: (01) 8020439 Email: info@ohss.ie Website: www.ohss.ie

Client and Survey Details

Client : Land Development Agency

Site : Our Ladys Buildings

Address : Our Ladys Buildings

Lee Road

Cork

Date of Survey : 05 Mar 2020

Review Survey : 05 Mar 2021

Surveyor : Anthony Maunsell

Method : WI-02 & WI-03

Report No. : 29173

Location Details

Building/Area : St Kevin's

Room/Section : 2nd Floor

Location : All Walls Floor and Ceiling

Description :

Sample No. :

Confirmation : --N\A--

Access : No Access

Normal Use :

Material Risk Assessment 372652

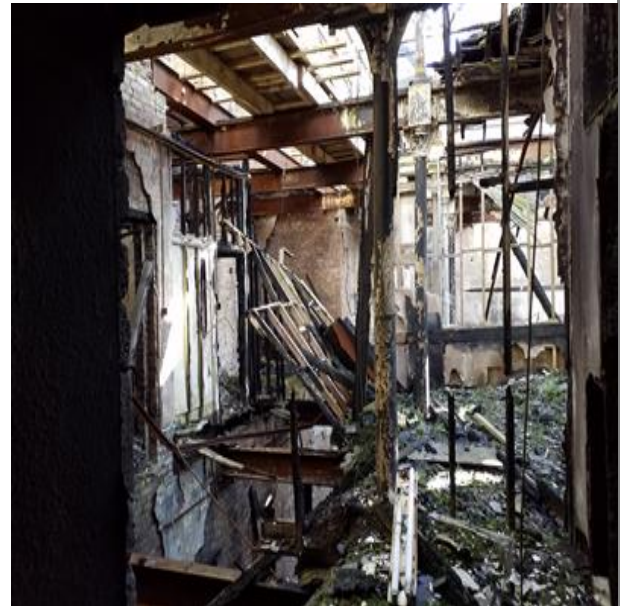
	Score	Risk Rating
Asbestos Type : --N\A--	0	High Risk
Type Of Product : --N\A--	0	Medium Risk
Condition : --N\A--	0	Low Risk
Surface Treatment : --N\A--	0	Very Low Risk
Quantity : --N\A--		
Material Assessment Score :	0	

Removal/Encapsulation Estimate

To be completed by the estimating contractor

	Costs	Notes
Labour		
Equipment		
Disposal		
Analytical		
Totals		

Photograph



Recommendations and Notes

--N\A--

While every effort was taken to insure the accuracy of this report we do not accept responsibility for any omissions or areas of the building not addressed in the report. This report is intended to assist in reducing the possibility of accidents and ill health by bringing to the client's attention identified asbestos containing materials. It is not implied that all other hazards are under control at the time of inspections.

Client and Survey Details

Client : Land Development Agency
 Site : Our Ladys Buildings
 Address : Our Ladys Buildings
 Lee Road
 Cork

Date of Survey : 05 Mar 2020
 Review Survey : 05 Mar 2021
 Surveyor : Anthony Maunsell
 Method : WI-02 & WI-03
 Report No. : 29173

Location Details

Building/Area : St Kevin's
 Room/Section : Top Floor
 Location : All Walls Floor and Ceiling
 Description :

Sample No. :
 Confirmation : --N\A--
 Access : No Access
 Normal Use :

Material Risk Assessment 372653

	Score	Risk Rating
Asbestos Type : --N\A--	0	High Risk
Type Of Product : --N\A--	0	Medium Risk
Condition : --N\A--	0	Low Risk
Surface Treatment : --N\A--	0	Very Low Risk
Quantity : --N\A--		
Material Assessment Score :	0	

Removal/Encapsulation Estimate

To be completed by the estimating contractor

	Costs	Notes
Labour		
Equipment		
Disposal		
Analytical		
Totals		

Photograph



Recommendations and Notes

--N\A--

Client and Survey Details

Client : Land Development Agency
 Site : Our Ladys Buildings
 Address : Our Ladys Buildings
 Lee Road
 Cork

Date of Survey : 05 Mar 2020
 Review Survey : 05 Mar 2021
 Surveyor : Anthony Maunsell
 Method : WI-02 & WI-03
 Report No. : 29173

Location Details

Building/Area : St Kevin's
 Room/Section : Top Floor
 Location : All Walls Floor and Ceiling
 Description :

Sample No. :
 Confirmation : --N\A--
 Access : No Access
 Normal Use :

Material Risk Assessment 372654

	Score	Risk Rating
Asbestos Type : --N\A--	0	High Risk
Type Of Product : --N\A--	0	Medium Risk
Condition : --N\A--	0	Low Risk
Surface Treatment : --N\A--	0	Very Low Risk
Quantity : --N\A--		
Material Assessment Score :	0	

Removal/Encapsulation Estimate

To be completed by the estimating contractor

	Costs	Notes
Labour		
Equipment		
Disposal		
Analytical		
Totals		

Photograph



Recommendations and Notes

--N\A--

Unit 2BEaT Centre, Stephenstown Industrial Estate, Balbriggan, Co. Dublin Tel: (01) 6905907 Fax: (01) 8020439 Email: info@ohss.ie Website: www.ohss.ie

Client and Survey Details

Client : Land Development Agency

Site : Our Ladys Buildings

Address : Our Ladys Buildings

Lee Road

Cork

Date of Survey : 05 Mar 2020

Review Survey : 05 Mar 2021

Surveyor : Anthony Maunsell

Method : WI-02 & WI-03

Report No. : 29173

Location Details

Building/Area : St Kevin's

Room/Section : Side Basement

Location : All Walls Floor and Ceiling

Description :

Sample No. :

Confirmation : --N\A--

Access : No Access

Normal Use :

Material Risk Assessment 372655

	Score	Risk Rating
Asbestos Type : --N\A--	0	High Risk
Type Of Product : --N\A--	0	Medium Risk
Condition : --N\A--	0	Low Risk
Surface Treatment : --N\A--	0	Very Low Risk
Quantity : --N\A--		
Material Assessment Score :	0	

Removal/Encapsulation Estimate

To be completed by the estimating contractor

	Costs	Notes
Labour		
Equipment		
Disposal		
Analytical		
Totals		

Photograph



Recommendations and Notes

--N\A--

While every effort was taken to insure the accuracy of this report we do not accept responsibility for any omissions or areas of the building not addressed in the report. This report is intended to assist in reducing the possibility of accidents and ill health by bringing to the client's attention identified asbestos containing materials. It is not implied that all other hazards are under control at the time of inspections.

Client and Survey Details

Client : Land Development Agency

Date of Survey : 05 Mar 2020

Site : Our Ladys Buildings

Review Survey : 05 Mar 2021

Address : Our Ladys Buildings

Surveyor : Anthony Maunsell

Lee Road

Method : WI-02 & WI-03

Cork

Report No. : 29173

Location Details

Building/Area : St Kevin's

Sample No. :

Room/Section : Basement

Confirmation : --N\A--

Location : All Walls Floor and Ceiling

Access : No Access

Description :

Normal Use :

Material Risk Assessment 372656

	Score	Risk Rating
Asbestos Type : --N\A--	0	High Risk
Type Of Product : --N\A--	0	Medium Risk
Condition : --N\A--	0	Low Risk
Surface Treatment : --N\A--	0	Very Low Risk
Quantity : --N\A--		
Material Assessment Score :	0	

Removal/Encapsulation Estimate

To be completed by the estimating contractor

	Costs	Notes
Labour		
Equipment		
Disposal		
Analytical		
Totals		

Photograph



Recommendations and Notes

--N\A--

Unit 2BEaT Centre, Stephenstown Industrial Estate, Balbriggan, Co. Dublin Tel: (01) 6905907 Fax: (01) 8020439 Email: info@ohss.ie Website: www.ohss.ie

Client and Survey Details

Client : Land Development Agency
 Site : Our Ladys Buildings
 Address : Our Ladys Buildings
 Lee Road
 Cork

Date of Survey : 05 Mar 2020
 Review Survey : 05 Mar 2021
 Surveyor : Anthony Maunsell
 Method : WI-02 & WI-03
 Report No. : 29173

Location Details

Building/Area : St Kevin's
 Room/Section : Ground Floor
 Location : All Walls Floor and Ceiling
 Description :

Sample No. :
 Confirmation : --N\A--
 Access : No Access
 Normal Use :

Material Risk Assessment 372649

	Score	Risk Rating
Asbestos Type : --N\A--	0	High Risk
Type Of Product : --N\A--	0	Medium Risk
Condition : --N\A--	0	Low Risk
Surface Treatment : --N\A--	0	Very Low Risk
Quantity : --N\A--		
Material Assessment Score :	0	

Removal/Encapsulation Estimate

To be completed by the estimating contractor

	Costs	Notes
Labour		
Equipment		
Disposal		
Analytical		
Totals		

Photograph



Recommendations and Notes

--N\A--

While every effort was taken to insure the accuracy of this report we do not accept responsibility for any omissions or areas of the building not addressed in the report. This report is intended to assist in reducing the possibility of accidents and ill health by bringing to the client's attention identified asbestos containing materials. It is not implied that all other hazards are under control at the time of inspections.

Unit 2BEaT Centre, Stephenstown Industrial Estate, Balbriggan, Co. Dublin Tel: (01) 6905907 Fax: (01) 8020439 Email: info@ohss.ie Website: www.ohss.ie

Client and Survey Details

Client : Land Development Agency

Site : Our Ladys Buildings

Address : Our Ladys Buildings

Lee Road

Cork

Date of Survey : 05 Mar 2020

Review Survey : 05 Mar 2021

Surveyor : Anthony Maunsell

Method : WI-02 & WI-03

Report No. : 29173

Location Details

Building/Area : Our Lady's

Room/Section : Farmyard

Location : Front Building

Description : Internal

Sample No. :

Confirmation : --N\A--

Access : No Access

Normal Use :

Material Risk Assessment 375031

	Score	Risk Rating
Asbestos Type : --N\A--	0	High Risk
Type Of Product : --N\A--	0	Medium Risk
Condition : --N\A--	0	Low Risk
Surface Treatment : --N\A--	0	Very Low Risk
Quantity : --N\A--		
Material Assessment Score :	0	

Removal/Encapsulation Estimate

To be completed by the estimating contractor

	Costs	Notes
Labour		
Equipment		
Disposal		
Analytical		
Totals		

Photograph



Recommendations and Notes

--N\A--

While every effort was taken to insure the accuracy of this report we do not accept responsibility for any omissions or areas of the building not addressed in the report. This report is intended to assist in reducing the possibility of accidents and ill health by bringing to the client's attention identified asbestos containing materials. It is not implied that all other hazards are under control at the time of inspections.

Client and Survey Details

Client : Land Development Agency

Date of Survey : 05 Mar 2020

Site : Our Ladys Buildings

Review Survey : 05 Mar 2021

Address : Our Ladys Buildings

Surveyor : Anthony Maunsell

Lee Road

Method : WI-02 & WI-03

Cork

Report No. : 29173

Location Details

Building/Area : Administration Block

Sample No. :

Room/Section : Internal

Confirmation : --N\A--

Location :

Access : No Access

Description :

Normal Use :

Material Risk Assessment 375040

	Score	Risk Rating
Asbestos Type : --N\A--	0	High Risk
Type Of Product : --N\A--	0	Medium Risk
Condition : --N\A--	0	Low Risk
Surface Treatment : --N\A--	0	Very Low Risk
Quantity : --N\A--		
Material Assessment Score :	0	

Removal/Encapsulation Estimate

To be completed by the estimating contractor

	Costs	Notes
Labour		
Equipment		
Disposal		
Analytical		
Totals		

Photograph



Recommendations and Notes

--N\A--

Client and Survey Details

Client :Land Development Agency	Date of Survey : 05 Mar 2020
Site :Our Ladys Buildings	Review Survey : 05 Mar 2021
Address :Our Ladys Buildings	Surveyor : Anthony Maunsell
Lee Road	Method : WI-02 & WI-03
Cork	Report No. : 29173

Location Details

Building/Area : House	Sample No. :
Room/Section : Internal	Confirmation : --N\A--
Location :	Access : No Access
Description :	Normal Use :

Material Risk Assessment 375042

	Score	Risk Rating
Asbestos Type : --N\A--	0	High Risk
Type Of Product : --N\A--	0	Medium Risk
Condition : --N\A--	0	Low Risk
Surface Treatment : --N\A--	0	Very Low Risk
Quantity : --N\A--		
Material Assessment Score :	0	

Removal/Encapsulation Estimate

To be completed by the estimating contractor

	Costs	Notes
Labour		
Equipment		
Disposal		
Analytical		
Totals		

Photograph



Recommendations and Notes

--N\A--

Unit 2BEaT Centre, Stephenstown Industrial Estate, Balbriggan, Co. Dublin Tel: (01) 6905907 Fax: (01) 8020439 Email: info@ohss.ie Website: www.ohss.ie

Client and Survey Details

Client : Land Development Agency

Site : Our Ladys Buildings

Address : Our Ladys Buildings

Lee Road

Cork

Date of Survey : 05 Mar 2020

Review Survey : 05 Mar 2021

Surveyor : Anthony Maunsell

Method : WI-02 & WI-03

Report No. : 29173

Location Details

Building/Area : Administration Block

Room/Section : Rear Internal

Location :

Description :

Sample No. :

Confirmation : --N\A--

Access : No Access

Normal Use :

Material Risk Assessment 375043

	Score	Risk Rating
Asbestos Type : --N\A--	0	High Risk
Type Of Product : --N\A--	0	Medium Risk
Condition : --N\A--	0	Low Risk
Surface Treatment : --N\A--	0	Very Low Risk
Quantity : --N\A--		
Material Assessment Score :	0	

Removal/Encapsulation Estimate

To be completed by the estimating contractor

	Costs	Notes
Labour		
Equipment		
Disposal		
Analytical		
Totals		

Photograph



Recommendations and Notes

--N\A--

While every effort was taken to insure the accuracy of this report we do not accept responsibility for any omissions or areas of the building not addressed in the report. This report is intended to assist in reducing the possibility of accidents and ill health by bringing to the client's attention identified asbestos containing materials. It is not implied that all other hazards are under control at the time of inspections.

Unit 2BEaT Centre, Stephenstown Industrial Estate, Balbriggan, Co. Dublin Tel: (01) 6905907 Fax: (01) 8020439 Email: info@ohss.ie Website: www.ohss.ie

Client and Survey Details

Client : Land Development Agency

Site : Our Ladys Buildings

Address : Our Ladys Buildings

Lee Road

Cork

Date of Survey : 05 Mar 2020

Review Survey : 05 Mar 2021

Surveyor : Anthony Maunsell

Method : WI-02 & WI-03

Report No. : 29173

Location Details

Building/Area : Administration Block

Room/Section : Rear Internal

Location :

Description :

Sample No. :

Confirmation : --N\A--

Access : No Access

Normal Use :

Material Risk Assessment 375044

	Score	Risk Rating
Asbestos Type : --N\A--	0	High Risk
Type Of Product : --N\A--	0	Medium Risk
Condition : --N\A--	0	Low Risk
Surface Treatment : --N\A--	0	Very Low Risk
Quantity : --N\A--		
Material Assessment Score :	0	

Removal/Encapsulation Estimate

To be completed by the estimating contractor

	Costs	Notes
Labour		
Equipment		
Disposal		
Analytical		
Totals		

Photograph



Recommendations and Notes

--N\A--

While every effort was taken to insure the accuracy of this report we do not accept responsibility for any omissions or areas of the building not addressed in the report. This report is intended to assist in reducing the possibility of accidents and ill health by bringing to the client's attention identified asbestos containing materials. It is not implied that all other hazards are under control at the time of inspections.

Unit 2BEaT Centre, Stephenstown Industrial Estate, Balbriggan, Co. Dublin Tel: (01) 6905907 Fax: (01) 8020439 Email: info@ohss.ie Website: www.ohss.ie

Client and Survey Details

Client : Land Development Agency

Date of Survey : 05 Mar 2020

Site : Our Ladys Buildings

Review Survey : 05 Mar 2021

Address : Our Ladys Buildings

Surveyor : Anthony Maunsell

Lee Road

Method : WI-02 & WI-03

Cork

Report No. : 29173

Location Details

Building/Area : Administration Block

Sample No. :

Room/Section : Rear Internal

Confirmation : --N\A--

Location :

Access : No Access

Description :

Normal Use :

Material Risk Assessment 375045

	Score	Risk Rating
Asbestos Type : --N\A--	0	High Risk
Type Of Product : --N\A--	0	Medium Risk
Condition : --N\A--	0	Low Risk
Surface Treatment : --N\A--	0	Very Low Risk
Quantity : --N\A--		
Material Assessment Score :	0	

Removal/Encapsulation Estimate

To be completed by the estimating contractor

	Costs	Notes
Labour		
Equipment		
Disposal		
Analytical		
Totals		

Photograph



Recommendations and Notes

--N\A--

While every effort was taken to insure the accuracy of this report we do not accept responsibility for any omissions or areas of the building not addressed in the report. This report is intended to assist in reducing the possibility of accidents and ill health by bringing to the client's attention identified asbestos containing materials. It is not implied that all other hazards are under control at the time of inspections.

Client and Survey Details

Client : Land Development Agency

Site : Our Ladys Buildings

Address : Our Ladys Buildings

Lee Road

Cork

Date of Survey : 05 Mar 2020

Review Survey : 05 Mar 2021

Surveyor : Anthony Maunsell

Method : WI-02 & WI-03

Report No. : 29173

Location Details

Building/Area : Administration Block

Room/Section : Rear Internal

Location :

Description :

Sample No. :

Confirmation : --N\A--

Access : No Access

Normal Use :

Material Risk Assessment 375046

	Score	Risk Rating
Asbestos Type : --N\A--	0	High Risk
Type Of Product : --N\A--	0	Medium Risk
Condition : --N\A--	0	Low Risk
Surface Treatment : --N\A--	0	Very Low Risk
Quantity : --N\A--		
Material Assessment Score :	0	

Removal/Encapsulation Estimate

To be completed by the estimating contractor

	Costs	Notes
Labour		
Equipment		
Disposal		
Analytical		
Totals		

Photograph



Recommendations and Notes

--N\A--



Customer Site
Survey Date
Valid Until
Commissioned by

Land Development Agency
 Our Ladys Buildings
 5/3/2020
 5/3/2021
 Land Development Agency

Type
Report Number
Surveyor
Review Date
Method

Refurbishment
 29173
 Anthony Maunsell
 5/3/2021
 WI-02 & WI-03



AREAS INSPECTED

Area(s) inspected during the survey where no ACM's where identified.

Risk Assessment	375050	Location	RA:375050 Administration Block Rear Oil Tank Roof
Risk Assessment	375051	Location	RA:375051 Administration Block Rear Boiler Roof
Risk Assessment	372658	Location	RA:372658 St Kevin's Roof Slates
Risk Assessment	372659	Location	RA:372659 St Kevin's Roof Slates
Risk Assessment	375018	Location	RA:375018 Our Lady's Tunnel/ Walkway Roof
Risk Assessment	375019	Location	RA:375019 Our Lady's Tunnel/ Walkway Internal Walls
Risk Assessment	375020	Location	RA:375020 Our Lady's Tunnel/ Walkway Internal Walls
Risk Assessment	375021	Location	RA:375021 Our Lady's Tunnel/ Walkway Internal Ceiling
Risk Assessment	375022	Location	RA:375022 Our Lady's Church All Walls Floor and Ceiling
Risk Assessment	375023	Location	RA:375023 Our Lady's Chapel Alter
Risk Assessment	375024	Location	RA:375024 Our Lady's Chapel Roof
Risk Assessment	372646	Location	RA:372646 St Kevin's Side Entrance All Walls and Ceiling
Risk Assessment	375032	Location	RA:375032 Our Lady's Entrance Demolished Building Floor Slab
Risk Assessment	375033	Location	RA:375033 Our Lady's Entrance Demolished Building Floor Slab
Risk Assessment	375034	Location	RA:375034 Our Lady's St Kevins Demolished Building Floor Slab
Risk Assessment	375039	Location	RA:375039 Administration Block Internal



Customer
Site
Survey Date
Valid Until
Commissioned by

Land Development Agency
Our Ladys Buildings
5/3/2020
5/3/2021
Land Development Agency

Type
Report Number
Surveyor
Review Date
Method

Refurbishment
29173
Anthony Maunsell
5/3/2021
WI-02 & WI-03



AREAS INSPECTED

Area(s) inspected during the survey where no ACM's were identified.

Risk Assessment	375041	Location	RA:375041 Administration Block Rear Sheds All Walls Floor and Ceiling
-----------------	--------	----------	---

Client and Survey Details

Client : Land Development Agency	Date of Survey : 05 Mar 2020
Site : Our Ladys Buildings	Review Survey : 05 Mar 2021
Address : Our Ladys Buildings	Surveyor : Anthony Maunsell
Lee Road	Method : WI-02 & WI-03
Cork	Report No. : 29173

Location Details 375050 No Asbestos Found

Building/Area : Administration Block
Room/Section : Rear Oil Tank
Location : Roof
Description : Felts
Sample No. : AMB20200319007
Confirmation : Sample Taken
Access : Full Access
Normal Use :
Recommendations :



Location Details 375051 No Asbestos Found

Building/Area : Administration Block
Room/Section : Rear Boiler
Location : Roof
Description : Felts
Sample No. :
Confirmation : Sample Taken
Access : Full Access
Normal Use :
Recommendations :



Location Details 372658 No Asbestos Found

Building/Area : St Kevin's
Room/Section : Roof
Location : Slates
Description : Natural and NT
Sample No. :
Confirmation : --N\A--
Access : Full Access
Normal Use :
Recommendations :



Client and Survey Details

Client : Land Development Agency	Date of Survey : 05 Mar 2020
Site : Our Ladys Buildings	Review Survey : 05 Mar 2021
Address : Our Ladys Buildings	Surveyor : Anthony Maunsell
Lee Road	Method : WI-02 & WI-03
Cork	Report No. : 29173

Location Details 372659 No Asbestos Found

Building/Area : St Kevin's
Room/Section : Roof
Location : Slates
Description : Natural and NT
Sample No. :
Confirmation : --N\A--
Access : Full Access
Normal Use :
Recommendations :



Location Details 375018 No Asbestos Found

Building/Area : Our Lady's
Room/Section : Tunnel/ Walkway
Location : Roof
Description : Natural Slates
Sample No. :
Confirmation : --N\A--
Access : Full Access
Normal Use :
Recommendations :



Location Details 375019 No Asbestos Found

Building/Area : Our Lady's
Room/Section : Tunnel/ Walkway
Location : Internal Walls
Description : Solid
Sample No. :
Confirmation : --N\A--
Access : Full Access
Normal Use :
Recommendations :



Client and Survey Details

Client : Land Development Agency	Date of Survey : 05 Mar 2020
Site : Our Ladys Buildings	Review Survey : 05 Mar 2021
Address : Our Ladys Buildings	Surveyor : Anthony Maunsell
Lee Road	Method : WI-02 & WI-03
Cork	Report No. : 29173

Location Details 375020 No Asbestos Found

Building/Area : Our Lady's
Room/Section : Tunnel/ Walkway
Location : Internal Walls
Description : Solid
Sample No. :
Confirmation : --N\A--
Access : Full Access
Normal Use :
Recommendations :



Location Details 375021 No Asbestos Found

Building/Area : Our Lady's
Room/Section : Tunnel/ Walkway
Location : Internal Ceiling
Description : lath and Plaster
Sample No. :
Confirmation : --N\A--
Access : Full Access
Normal Use :
Recommendations :



Location Details 375022 No Asbestos Found

Building/Area : Our Lady's
Room/Section : Church
Location : All Walls Floor and Ceiling
Description : Solid and Timber
Sample No. :
Confirmation : --N\A--
Access : Full Access
Normal Use :
Recommendations :



Client and Survey Details

Client : Land Development Agency	Date of Survey : 05 Mar 2020
Site : Our Ladys Buildings	Review Survey : 05 Mar 2021
Address : Our Ladys Buildings	Surveyor : Anthony Maunsell
Lee Road	Method : WI-02 & WI-03
Cork	Report No. : 29173

Location Details 375023 No Asbestos Found

Building/Area : Our Lady's
Room/Section : Chapel
Location : Alter
Description : Stipple
Sample No. : AMB20200319001
Confirmation : Sample Taken
Access : Full Access
Normal Use :
Recommendations :



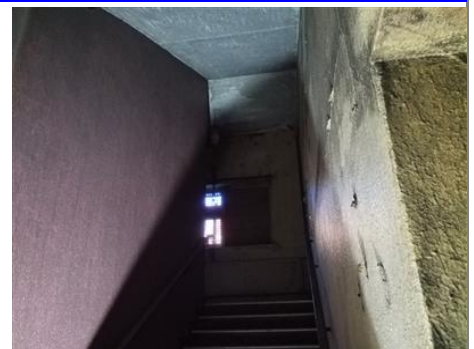
Location Details 375024 No Asbestos Found

Building/Area : Our Lady's
Room/Section : Chapel
Location : Roof
Description : Natural Slates
Sample No. :
Confirmation : --N\A--
Access : Full Access
Normal Use :
Recommendations :



Location Details 372646 No Asbestos Found

Building/Area : St Kevin's
Room/Section : Side Entrance
Location : All Walls and Ceiling
Description : Solid
Sample No. :
Confirmation : --N\A--
Access : Full Access
Normal Use :
Recommendations :



Client and Survey Details

Client : Land Development Agency	Date of Survey : 05 Mar 2020
Site : Our Ladys Buildings	Review Survey : 05 Mar 2021
Address : Our Ladys Buildings	Surveyor : Anthony Maunsell
Lee Road	Method : WI-02 & WI-03
Cork	Report No. : 29173

Location Details 375032 No Asbestos Found

Building/Area : Our Lady's
Room/Section : Entrance Demolished Building
Location : Floor Slab
Description : Lino on Solid
Sample No. :
Confirmation : --N\A--
Access : Full Access
Normal Use :
Recommendations :



Location Details 375033 No Asbestos Found

Building/Area : Our Lady's
Room/Section : Entrance Demolished Building
Location : Floor Slab
Description : Lino on Solid
Sample No. :
Confirmation : --N\A--
Access : Full Access
Normal Use :
Recommendations :



Location Details 375034 No Asbestos Found

Building/Area : Our Lady's
Room/Section : St Kevins Demolished Building
Location : Floor Slab
Description : Ceramic on Solid
Sample No. :
Confirmation : --N\A--
Access : Full Access
Normal Use :
Recommendations :



Client and Survey Details

Client : Land Development Agency	Date of Survey : 05 Mar 2020
Site : Our Ladys Buildings	Review Survey : 05 Mar 2021
Address : Our Ladys Buildings	Surveyor : Anthony Maunsell
Lee Road	Method : WI-02 & WI-03
Cork	Report No. : 29173

Location Details 375039 --N\A--

Building/Area : Administration Block
 Room/Section : Internal
 Location :
 Description :
 Sample No. :
 Confirmation : --N\A--
 Access : Full Access
 Normal Use :
 Recommendations :
 ;



Location Details 375041 No Asbestos Found

Building/Area : Administration Block
 Room/Section : Rear Sheds
 Location : All Walls Floor and Ceiling
 Description : Solid and Metal
 Sample No. :
 Confirmation : --N\A--
 Access : Full Access
 Normal Use :
 Recommendations :
 ;





Sample Analysis



Drawings







Rope seals to Boiler and Paper Gaskets



Fire Doors throughout building.



Vinyl Floor Tiles and Bitumen adhesive containing asbestos

Drawing Legend		Drawing Revisions			Date	Scale	Project Number	Our Ladys , Cork.	 QMF 139 Rev 1
Contains Asbestos		Not Accessed Presumed To Contain Asbestos		Rev #	Revision Description	Date	29173		
Sample Point Location	*	No Access Under Fixed Floor Coverings Investigate Prior To Disturbance					Drawn By		
							AM		
						11/03/20	This drawing is for illustration purposes only		
						Drawing No			
						1 of 2			



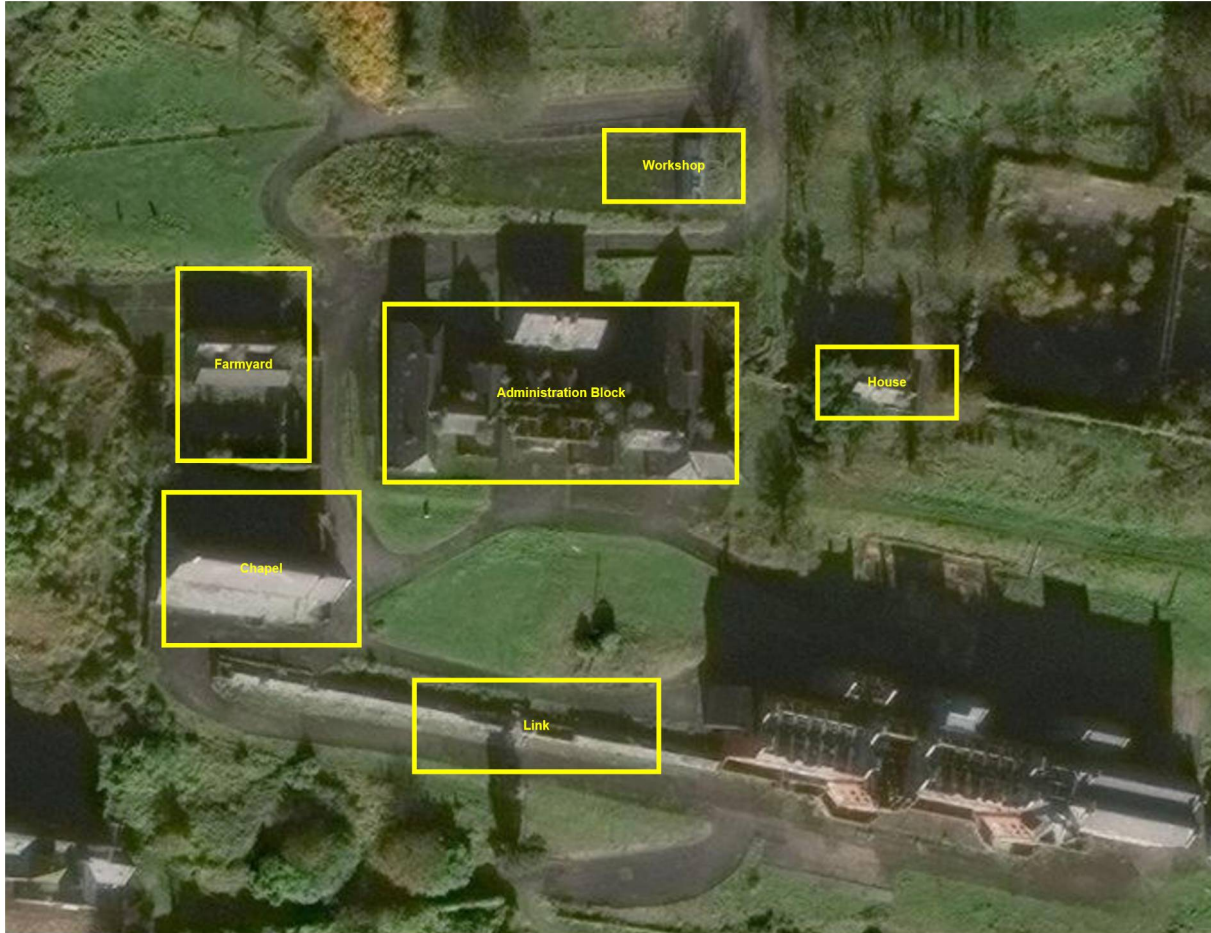
Farmyard Shed roof sheeting and broken debris on ground



Vinyl floor tiles and bitumen adhesive







Rope Seals to Chapel Boiler



Lean too Roof slates



Administration Block internal

Drawing Legend		Drawing Revisions			Date	Scale	Project Number	Our Ladys , Cork.	 QMF 139 Rev 1
Contains Asbestos		Not Accessed Presumed To Contain Asbestos		Rev #	Revision Description	Date	29173		
Sample Point Location	*	No Access Under Fixed Floor Coverings Investigate Prior To Disturbance					Drawn By		
							AM		
						11/03/20	This drawing is for illustration purposes only		
						2 of 2			